

Blackwood

with Clifton facade



Blackwood

Effortless style and smart design come together to make the Blackwood an ideal family home that works for you.

Designed to thrive with an impressive 8.2 energy star rating, this all-electric, solar-powered home breathes meaningful innovation and flow.

Start each day in privacy and comfort in a spacious master suite that features a dressing room and large, elegant ensuite.

The study at the front of the home assures work goes uninterrupted. An expansive, generous open plan living spills out to an impressive alfresco tucked away to the side of the home.

Generous kitchen bench spaces and a large walk-in pantry ensure preparation is a breeze,

while European appliances and designer tapware give this space a sleek minimal finish.

Wrapped in an architectural custom exterior, the Clifton facade features a simplistic yet striking appearance making your home the envy of the street.

Bold material selection and carefully considered sustainable features, raise this family home to the heights of relaxed and intelligent sophistication.



8.2 star
energy
rating



Designed to shape the
future of Australian homes.

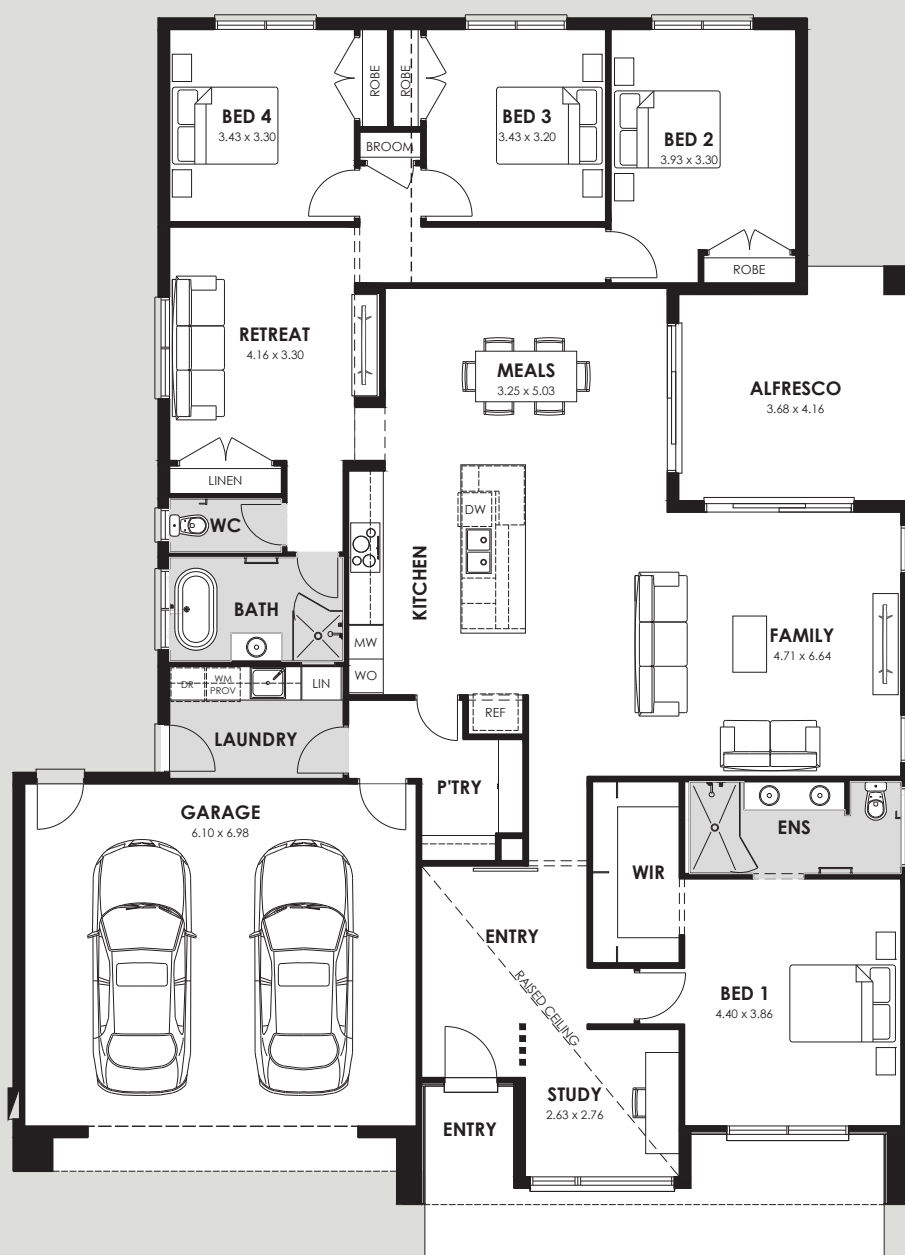
 4
  2
  2.5
  2

Areas

Ground Floor	214.25 sq.m	23.06 sq
Garage	47.11 sq.m	5.07 sq
Porch	18.35 sq.m	1.98 sq
Outdoor Living	16.22 sq.m	1.75 sq
Total Area	295.93 sq.m	31.85 sq

Key Features

- Stone benchtops
- European Bertazzoni appliances
- Large walk-in pantry
- Alfresco / outdoor living
- Retreat / home theatre
- Study / home office
- High ceilings to entry and study
- Colorbond® steel roof



22115

16010

Sustainable features to enhance your health, happiness and wellbeing.



Solar energy

Have complete control over your energy usage. Your own solar power generation means there will be no surprises come your energy bills. Add the benefits of a Sonnen home battery and store your solar energy to reduce reliance on the grid power.



Low VOC 3-coat paint system by Haymes

99% free of Volatile Organic Compounds that contribute to allergies, this paint is easy to clean and stain resistant making it suitable for high-wear areas. The satin finish helps keep paint looking fresher for longer, particularly in the kitchen and bathroom where moisture is present.



Triple glazed windows & doors

Designed and built to last in the harsh climate of Australia, the uPVC triple glazing system by Zenit reduces energy waste by up to 80% to create a perfectly comfortable atmosphere in your home, eliminating noise pollution and the outside weather from entering.



Darwin water filtration

Helps reduce the risks of poor water quality by filtering out impurities and improving taste. You and your family can benefit from cleaner, better tasting water.



Darwin air purification

Available with mobile app control, Delos filters out the pollutants and airborne contaminants and toxins from inside the home to enhance your health and wellbeing.



Colorbond® roof

Colorbond® steel reflects more of the sun's heat to keep cooling costs down in summer and retain heat in winter. Strong, secure, energy smart and 100% recyclable, Colorbond® steel is tried and tested in Australian conditions to withstand its harsh climate.



Eco carpet and engineered timber flooring

Carpet is made in part from renewably sourced materials and requires no topical treatment. Enjoy chemical free cleaning with just water. Engineered timber is naturally more energy efficient than many other flooring solutions.



Smart home hubs by Delos and My Place

MyPlace makes life more comfortable by giving you smart control over the things you use every day, such as lights, heating and cooling. Darwin's intelligent software constantly monitors the changing conditions of your home to suit your family's health and wellness needs throughout the day and night.



Eco-friendly grout by Kerakoll

Pure and natural bonding system formulated with a low VOC resin-based organic matrix. Available in 50 design colours.

Chatham Homes inspire healthy living by building a new generation of quality, sustainable homes.

At Chatham Homes, we build quality family homes for a better, secure, more sustainable future. This carries with it, not only environmental benefits, but adds a sense of wellbeing and comfort to our lives.

Four key factors continually inform our approach and drive innovation:

Seamless experience

Enjoy a smooth transition from planning to designing to building. We provide you with everything you need to develop your forever home.

Customised design

We help you personalise your floorplan and facade to suit the needs of your family.

Market-leading brands

We partner with Australia's best brands to provide you with the most innovative and exciting products for your home.

Energy-efficient solutions

Great for the environment and good for your bottom-line, energy-efficient technology promotes convenience, sustainability, and healthy living.





Lucas Estate 85 Shortridge Drive, Lucas 3350

Chatham Homes Head Office:

Level 1 / Office 505, 4 Main Street Point Cook VIC 3030

chathamhomes.com.au 1300 795 820

River Dale Building Group Pty Ltd TA
Chatham Homes. Licence CDB-U 62546

